

# STAMFORD®

## S5L1D-G4 Wdg.311 - Technical Data Sheet

### Standards

STAMFORD industrial alternators meet the requirements of the relevant parts of the IEC 60034 and the relevant sections of other international standards such as BS5000-3, ISO 8528-3, VDE 0530, NEMA MG1-32, CSA C22.2-100 and AS 60034. Other standards and certifications can be considered on request.

### Quality Assurance

Alternators are manufactured using production procedures having a quality assurance level to BS EN ISO 9001.



### Excitation and Voltage Regulators

Excitation System					
AVR Type	AS440	MX341	MX321	MX322	
Voltage Regulation	± 1%	± 1%	± 0.5%	± 0.5%	with 4% Engine Governing
AVR Power	Self-Excited	PMG	PMG	PMG	

No Load Excitation Voltage (V)	11.4 - 10.7
No Load Excitation Current (A)	0.66 - 0.56
Full Load Excitation Voltage (V)	44
Full Load Excitation Current (A)	2.6
Exciter Time Constant (seconds)	0.099

# STAMFORD

## S5L1D-G4 Wdg.311

Electrical Data								
Insulation System	H							
Stator Winding	Double Layer Lap							
Winding Pitch	2/3							
Winding Leads	12							
Winding Number	311							
Number of Poles	4							
IP Rating	IP23							
RFI Suppression	BS EN 61000-6-2 & BS EN 61000-6-4, VDE 0875G, VDE 0875N. Refer to factory for others							
Waveform Distortion	NO LOAD < 1.5% NON-DISTORTING BALANCED LINEAR LOAD < 5.0%							
Short Circuit Ratio	1/Xd							
Steady State X/R Ratio	16.64							
	50 Hz				60 Hz			
Telephone Interference	THF<2%				TIF<50			
Cooling Air Flow	1.25 m³/sec				1.5 m³/sec			
Voltage Series Star (V)	380	400	415	440	416	440	460	480
Voltage Parallel Star (V)	190	200	208	220	208	220	230	240
Voltage Series Delta (V)	220	230	240	254	240	254	266	277
kVA Base Rating (Class H) for Reactance Values (kVA)	680	700	700	680	750	794	831	875
Saturated Values in Per Unit at Base Ratings and Voltages								
Xd Dir. Axis Synchronous	2.95	2.74	2.55	2.20	3.26	3.08	2.95	2.85
X'd Dir. Axis Transient	0.16	0.15	0.14	0.12	0.18	0.17	0.16	0.16
X''d Dir. Axis Subtransient	0.11	0.10	0.10	0.08	0.12	0.12	0.11	0.11
Xq Quad. Axis Reactance	2.46	2.29	2.13	1.84	2.72	2.58	2.47	2.39
X''q Quad. Axis Subtransient	0.26	0.24	0.22	0.19	0.29	0.27	0.26	0.25
XL Stator Leakage Reactance	0.05	0.04	0.04	0.03	0.05	0.05	0.05	0.04
X2 Negative Sequence Reactance	0.18	0.17	0.16	0.14	0.20	0.19	0.18	0.18
X0 Zero Sequence Reactance	0.02	0.01	0.01	0.01	0.02	0.02	0.02	0.01
Unsaturated Values in Per Unit at Base Ratings and Voltages								
Xd Dir. Axis Synchronous	3.54	3.29	3.05	2.64	3.91	3.70	3.54	3.43
X'd Dir. Axis Transient	0.19	0.17	0.16	0.14	0.21	0.19	0.19	0.18
X''d Dir. Axis Subtransient	0.13	0.12	0.11	0.10	0.14	0.14	0.13	0.13
Xq Quad. Axis Reactance	2.54	2.36	2.19	1.89	2.80	2.65	2.54	2.46
X''q Quad. Axis Subtransient	0.31	0.29	0.27	0.23	0.34	0.32	0.31	0.30
XL Stator Leakage Reactance	0.05	0.05	0.04	0.04	0.06	0.05	0.05	0.05
Xlr Rotor Leakage Reactance	0.01	0.01	0.01	0.01	0.02	0.01	0.01	0.01
X2 Negative Sequence Reactance	0.22	0.20	0.19	0.16	0.24	0.23	0.22	0.21
X0 Zero Sequence Reactance	0.02	0.02	0.02	0.01	0.02	0.02	0.02	0.02

# STAMFORD

## S5L1D-G4 Wdg.311

Time Constants (Seconds)		
T'd Transient Time Const.	0.080	
T''d Sub-Transient Time Const.	0.012	
T'do O.C. Field Time Const.	2.500	
Ta Armature Time Const.	0.019	
T''q Sub-Transient Time Const.	0.0120	
Resistances in Ohms ( $\Omega$ ) at 22°C		
Stator Winding Resistance (Ra), per phase for series connected	0.00350	
Rotor Winding Resistance (Rf)	2.247	
Exciter Stator Winding Resistance	17	
Exciter Rotor Winding Resistance per phase	0.092	
PMG Phase Resistance (Rpmg) per phase	1.91	
Positive Sequence Resistance (R1)	0.0044	
Negative Sequence Resistance (R2)	0.0050	
Zero Sequence Resistance (R0)	0.0044	
Saturation Factors	400V	480V
SG1.0	0.324	0.309
SG1.2	1.253	1.064
Mechanical Data		
Shaft and Keys	All alternator rotors are dynamically balanced to better than ISO 21940-11 Grade 2.5 for minimum vibration in operation. Two bearing generators are balanced with a half key.	
	1 Bearing	2 Bearing
SAE Adaptor	SAE 1, 0, 0.5	
Moment of Inertia	10.9052 kgm <sup>2</sup>	-
Weight Wound Stator	860kg	-
Weight Wound Rotor	700kg	-
Weight Complete Alternator	1780kg	-
Shipping weight in a Crate	1820kg	-
Packing Crate Size	160 x 90 x 115(cm)	-
Maximum Over Speed	2250 RPM for two minutes	
Bearing Drive End	-	-
Bearing Non-Drive End	Ball 6314	-

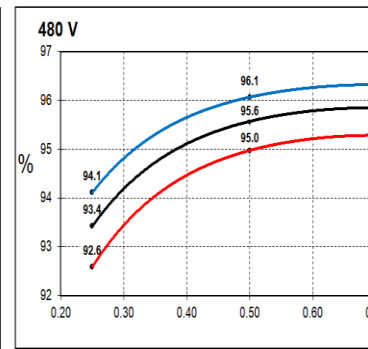
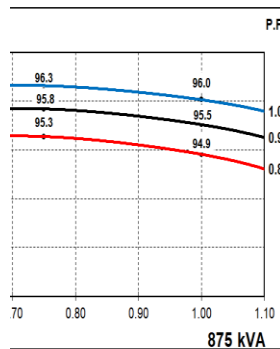
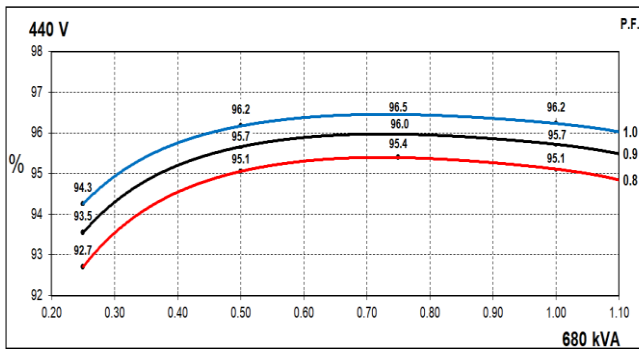
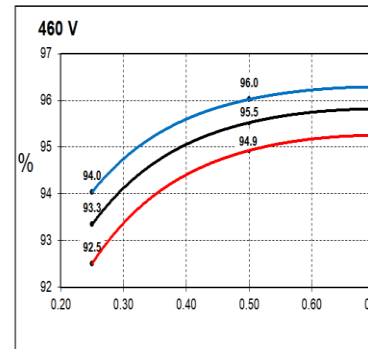
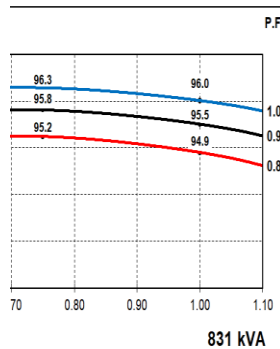
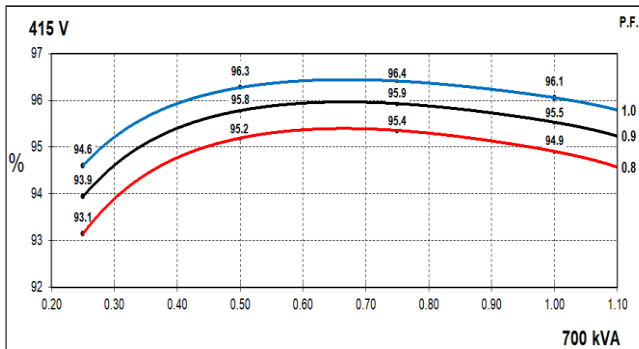
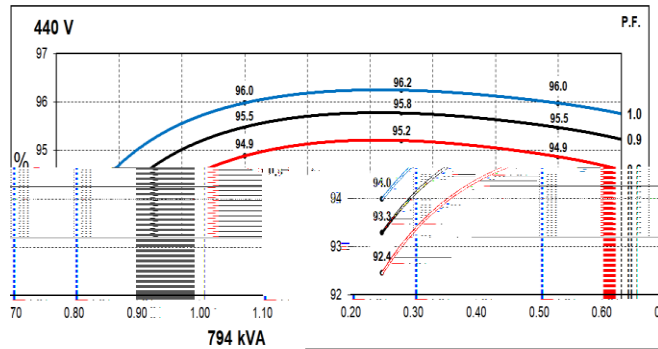
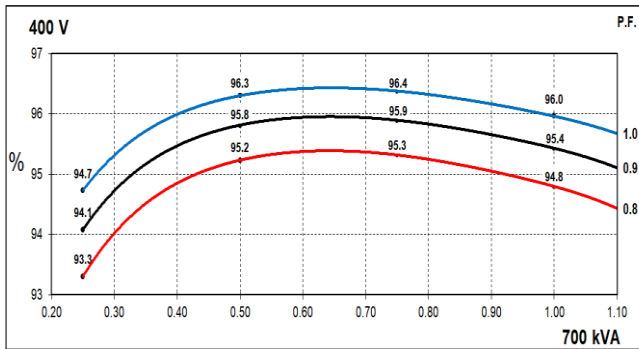
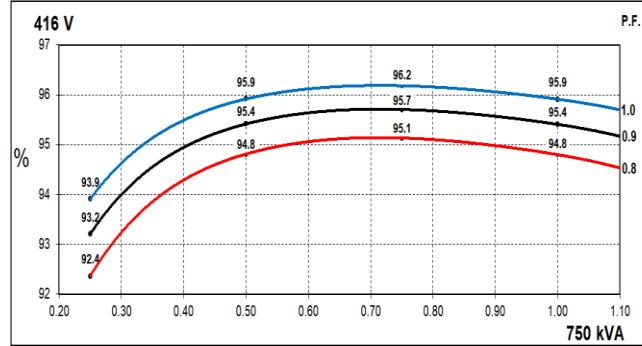
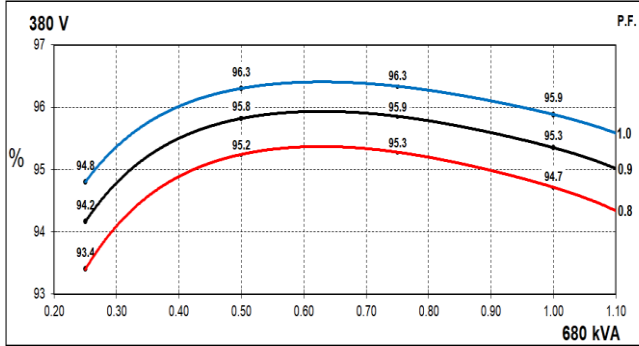
# STAMFORD

## S5L1D-G4 Wdg.311

### THREE PHASE EFFICIENCY CURVES

50Hz

60Hz

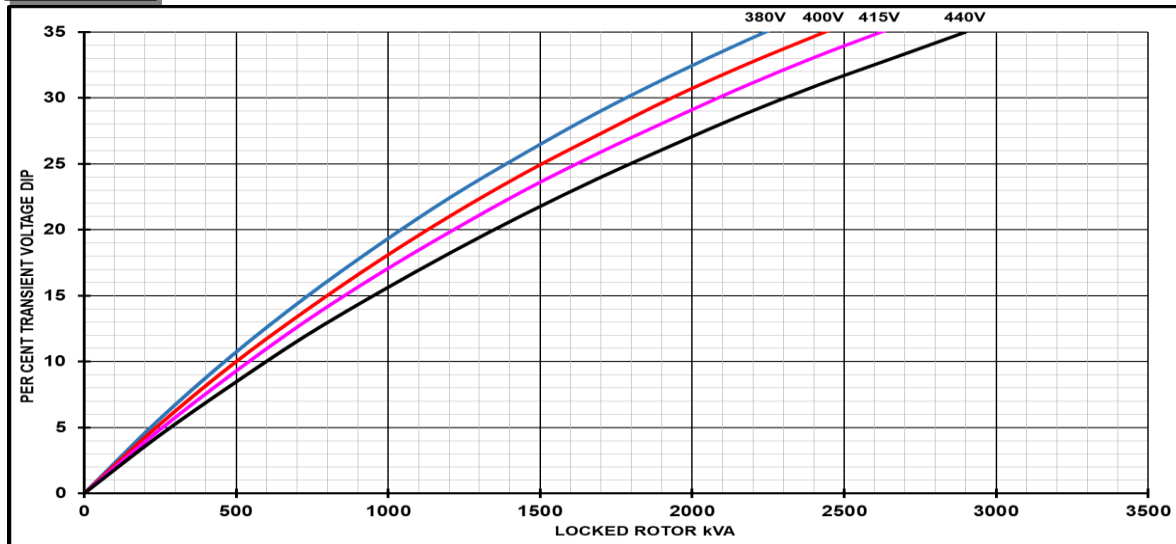


# STAMFORD

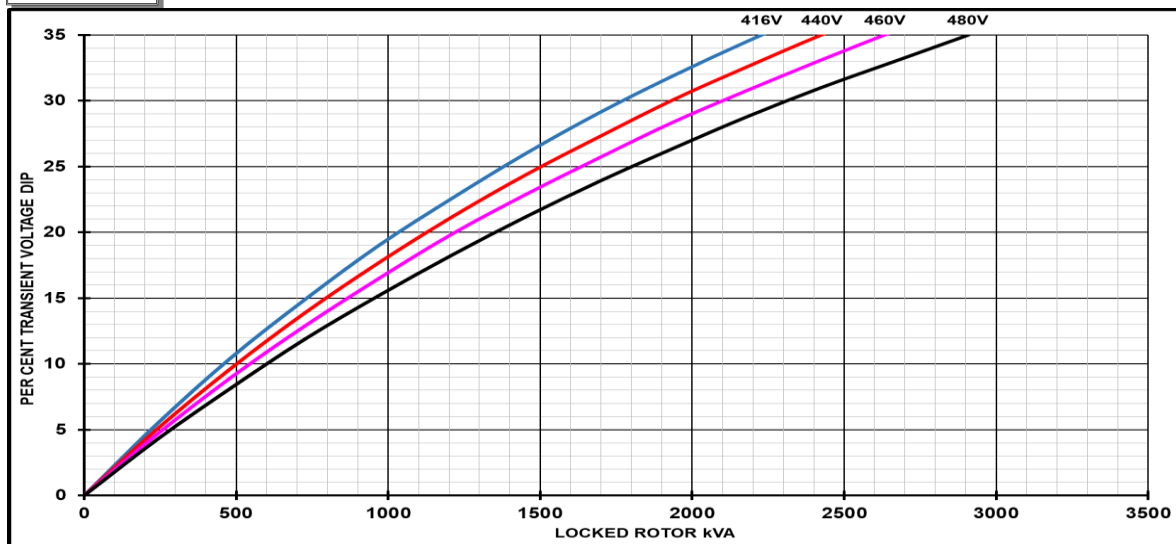
## S5L1D-G4 Wdg.311

### Locked Rotor Motor Starting Curves - Separately Excited

**50Hz**



**60Hz**



Transient Voltage Dip Scaling Factor		Transient Voltage Rise Scaling Factor	
Lagging PF	Scaling Factor	Lagging PF	Scaling Factor
<= 0.4	1.00	<= 0.4	1.25
0.5	0.95	0.5	1.20
0.6	0.90	0.6	1.15
0.7	0.86	0.7	1.10
0.8	0.83	> 0.7	1.00
0.9	0.75		
0.95	0.70		
1	0.65		

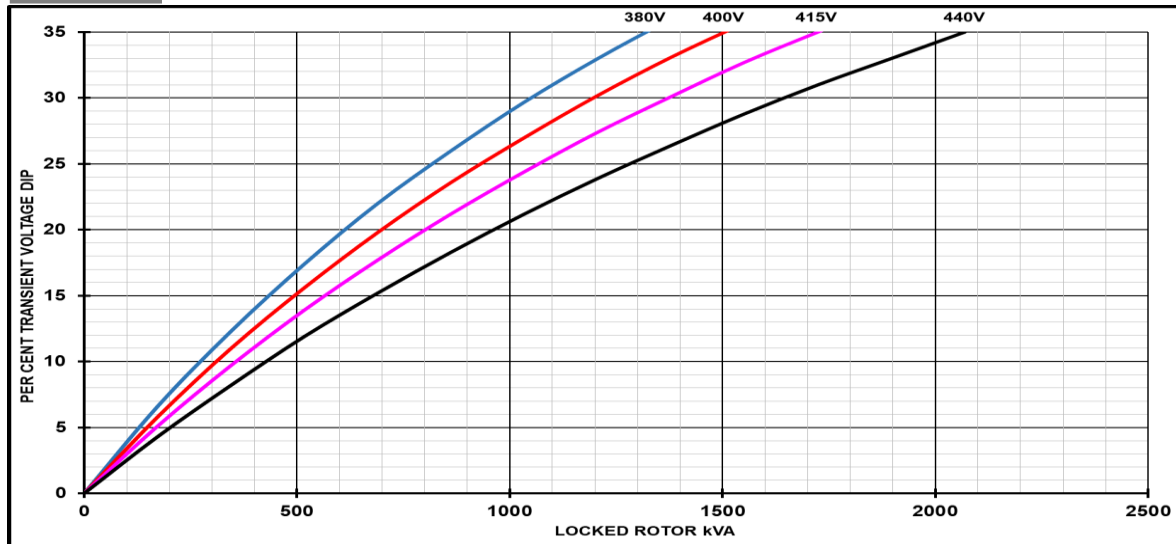
**Note:** To determine % Transient Voltage Dip or Voltage Rise at various PF, multiply the % Voltage Dip from the curve directly by the Scaling Factor.

# STAMFORD

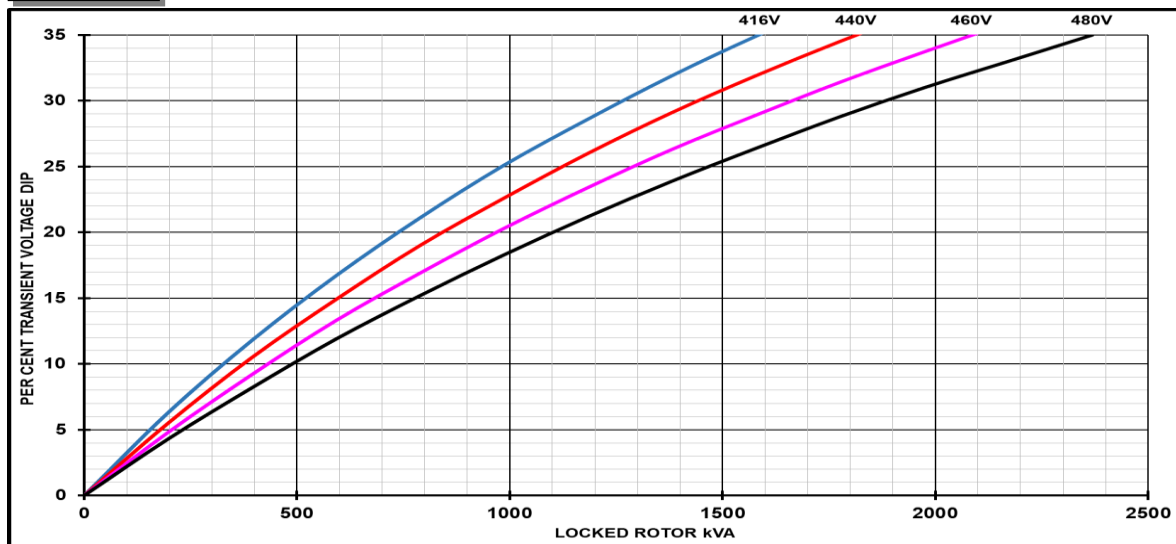
S5L1D-G4 Wdg.311

## Locked Rotor Motor Starting Curves - Self Excited

**50Hz**



**60Hz**



Transient Voltage Dip Scaling Factor		Transient Voltage Rise Scaling Factor	
Lagging PF	Scaling Factor	Lagging PF	Scaling Factor
<= 0.4	1.00	<= 0.4	1.25
0.5	0.95	0.5	1.20
0.6	0.90	0.6	1.15
0.7	0.86	0.7	1.10
0.8	0.83	> 0.7	1.00
0.9	0.75		
0.95	0.70		
1	0.65		

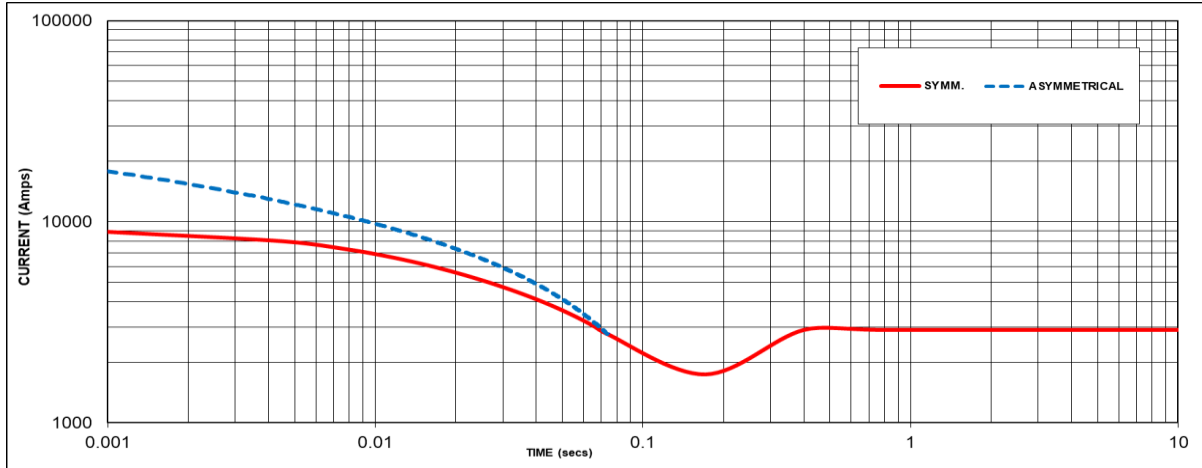
Note: To determine % Transient Voltage Dip or Voltage Rise at various PF, multiply the % Voltage Dip from the curve directly by the Scaling Factor.

# STAMFORD®

## S5L1D-G4 Wdg.311

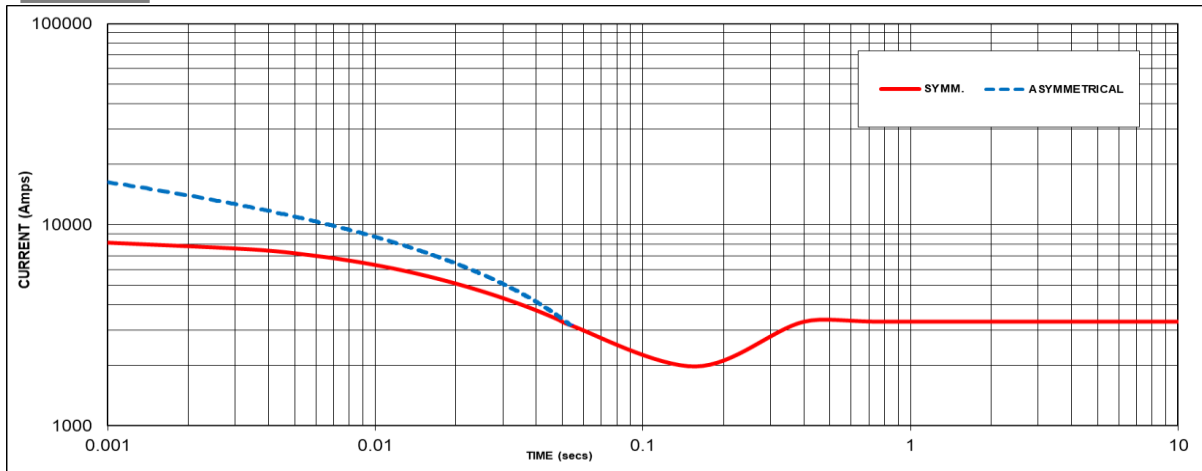
### Three-phase Short Circuit Decrement Curve - Separately Excited

**50Hz**



Sustained Short Circuit = 2900 Amps

**60Hz**



Sustained Short Circuit = 3300 Amps

**Note 1**

The following multiplication factors should be used to adjust the values from curve between time 0.001 seconds and the minimum current point in respect of nominal operating voltage :

50Hz		60Hz	
Voltage	Factor	Voltage	Factor
380V	X 1.00	416V	X 1.00
400V	X 1.05	440V	X 1.06
415V	X 1.09	460V	X 1.10
440V	X 1.16	480V	X 1.15

The sustained current value is constant irrespective of voltage level

If MX322 or digital AVR is used, the sustained short-circuit current value is to be multiplied by a factor of 1.1.

**Note 2**

The following multiplication factor should be used to convert the values calculated in accordance with NOTE 1 to those applicable to the various types of short circuit :

	3-phase	2-phase L-L	1-phase L-N
Instantaneous	x 1.00	x 0.87	x 1.30
Minimum	x 1.00	x 1.80	x 3.20
Sustained	x 1.00	x 1.50	x 2.50
Max. sustained duration	10 sec.	5 sec.	2 sec.

**Note 3**

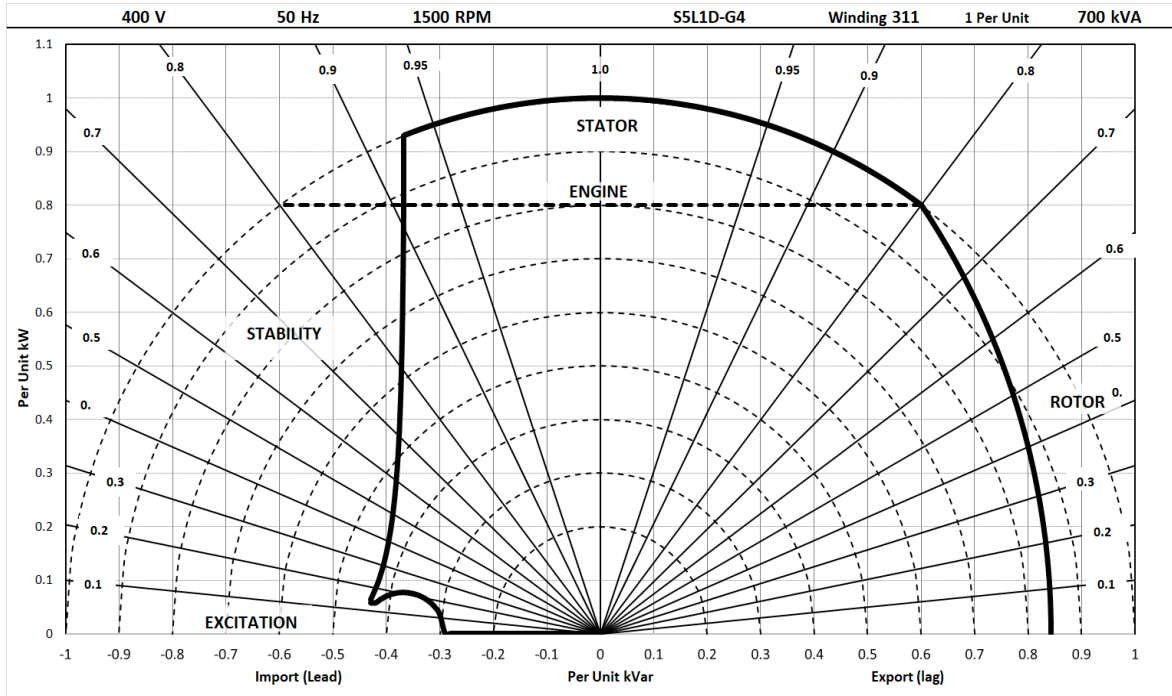
All other times are unchanged  
 Curves are drawn for Star connections under no-load excitation at rated speeds. For other connection (where applicable) the following multipliers should be applied to current values as shown :  
 Parallel Star = Curve current value X 2  
 Series Delta = Curve current value X 1.732

# STAMFORD

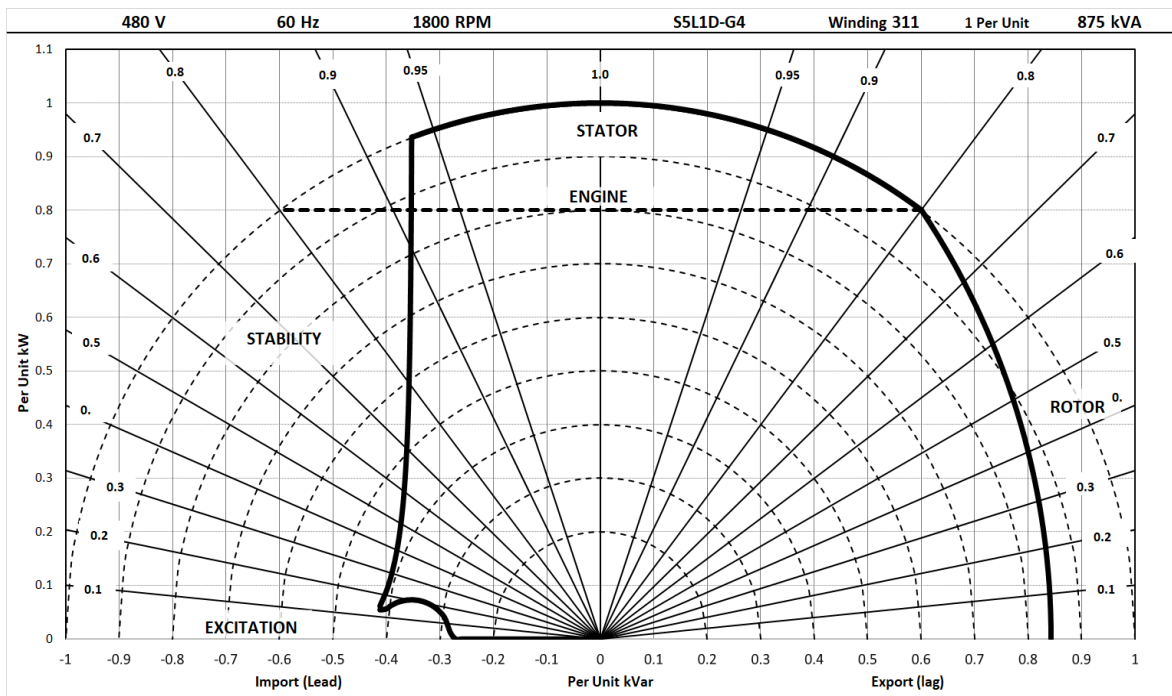
S5L1D-G4 Wdg.311

## Typical Alternator Operating Charts

**400V/50Hz**



**480V/60Hz**





# STAMFORD®

## S5L1D-G4 Wdg.311

### RATINGS AT 0.8 POWER FACTOR

Class - Temp Rise		Standby - 163/27°C				Standby - 150/40°C				Cont. H - 125/40°C				Cont. F - 105/40°C			
<b>50 Hz</b>	Series Star (V)	380	400	415	440	380	400	415	440	380	400	415	440	380	400	415	440
	Parallel Star (V)	190	200	208	220	190	200	208	220	190	200	208	220	190	200	208	220
	Series Delta (V)	220	230	240	254	220	230	240	254	220	230	240	254	220	230	240	254
	kVA	750	770	770	750	720	740	740	720	680	700	700	680	625	640	640	625
	kW	600	616	616	600	576	592	592	576	544	560	560	544	500	512	512	500
	Efficiency (%)	94.4	94.5	94.6	94.9	94.5	94.6	94.7	95.0	94.7	94.8	94.9	95.1	95.0	95.0	95.1	95.3
	kW Input	636	652	651	632	609	626	625	606	574	591	590	572	527	539	538	525

<b>60 Hz</b>	Series Star (V)	416	440	460	480	416	440	460	480	416	440	460	480	416	440	460	480
	Parallel Star (V)	208	220	230	240	208	220	230	240	208	220	230	240	208	220	230	240
	Series Delta (V)	240	254	266	277	240	254	266	277	240	254	266	277	240	254	266	277
	kVA	825	869	912	944	794	837	881	913	750	794	831	875	694	725	762	794
	kW	660	695	730	755	635	670	705	730	600	635	665	700	555	580	610	635
	Efficiency (%)	94.5	94.6	94.6	94.7	94.7	94.7	94.8	94.8	94.8	94.9	94.9	94.9	94.9	95.0	95.1	95.1
	kW Input	698	735	771	797	671	707	744	770	633	670	701	738	585	610	641	668

#### De-rates

All values tabulated above are subject to the following reductions:

- 5% when air inlet filters are fitted
- 3% for every 500 meters by which the operating altitude exceeds 1000 meters above mean sea level
- 3% for every 5°C by which the operational ambient temperature exceeds 40°C @ Class H temperature rise (please refer to applications for ambient temperature de-rates at other temperature rise classes)
- For any other operating conditions impacting the cooling circuit please refer to applications

Note: Requirement for operating in an ambient exceeding 60°C and altitude exceeding 4000 meters (for <690V) or 1500 meters (for >690V) must be referred to applications.

#### Dimensional and Torsional Drawing

For dimensional and torsional information please refer to the alternator General Arrangement and rotor drawings available on our website (<http://stamford-avk.com/>)

**Note:** Continuous development of our products means that the information contained in our data sheets can change without notice, and specifications should always be confirmed with Cummins Generator Technologies prior to purchase.



Follow us @stamfordavk



Cummins Generator Technologies



View our videos at [youtube.com/stamfordavk](https://youtube.com/stamfordavk)

[stamford-avk.com](https://stamford-avk.com)

**For Applications Support:  
[applications@cummins.com](mailto:applications@cummins.com)**

**For Customer Service:  
[emea.service@cummins.com](mailto:emea.service@cummins.com)**

**For General Enquiries:  
[Stamford-avk@cummins.com](mailto:Stamford-avk@cummins.com)**

Copyright 2020. Cummins Generator Technologies Ltd. All rights reserved.  
Cummins and the Cummins logo are registered trade marks of Cummins Inc.  
STAMFORD is a registered trade mark of Cummins Generator Technologies Ltd.

